

Job name 2 - Linearization
Measurement file 2 - Linearization-005
Reference primaries bizhub PRO C6500 - medplussilk - LIN - 2.cie
Reference tone value increase bizhub PRO C6500 - medplussilk - FierySTD - 4.ref
Date / Time ?t 19. II 15:46:25 2009
Instrument GretagMacbeth EyeOne
Measurement backing Substrate backing
Illuminant/Observer D50 / 2

Notes

Color Care quality control
- Color Care Target v2.3
- Color Care linearization check

This checks the printing systems linearization (calibration) according to recommended values.

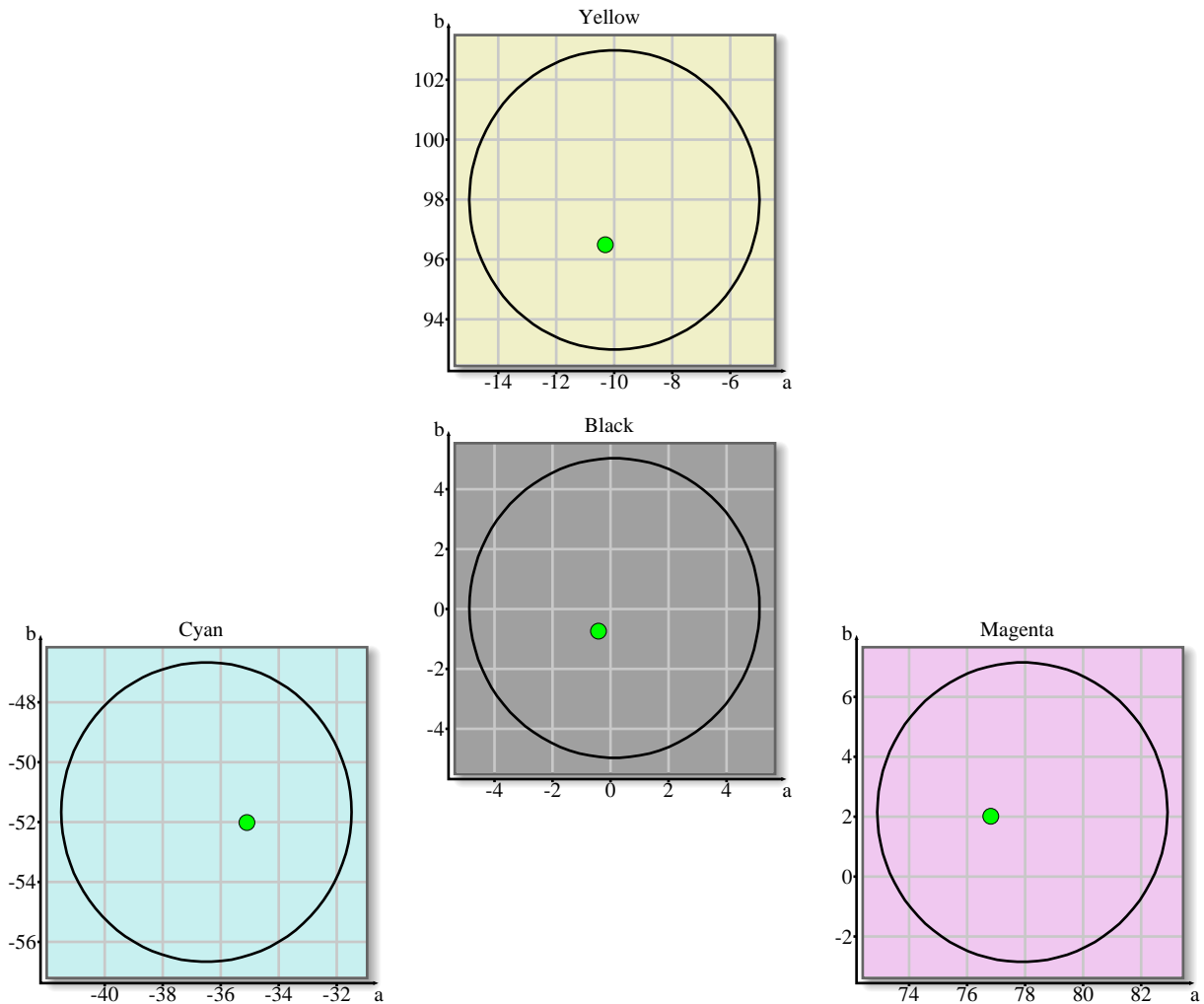
Criterion	Result
1 Colorimetric Tolerances	OK
2 Tolerances for Dot Gain	not OK ●
3 Spread Tolerance	not OK ●

Tone reproduction curve and primary colours tolerances exceeded

1 Colorimetric Tolerances

ID	Name	Target				Reference / Tolerance				Measured			Color difference					
		C	M	Y	K	L*	a*	b*	ΔE^*ab	L*	a*	b*	ΔE^*ab	ΔL^*	Δa^*	Δb^*	ΔC^*	ΔH^*
21	C100	100	0	0	0	53.4	-36.5	-51.7	5.0	54.5	-35.1	-52.0	1.8	1.0	1.4	-0.3	0.5	1.7
42	M100	0	100	0	0	48.7	77.9	2.2	5.0	49.3	76.8	2.0	1.2	0.6	-1.1	-0.1	1.1	0.6
63	Y100	0	0	100	0	91.5	-10.0	98.0	5.0	90.8	-10.3	96.5	1.7	-0.7	-0.3	-1.5	1.5	0.8
84	K100	0	0	0	100	11.3	0.1	0.0	5.0	15.3	-0.4	-0.7	4.1	4.0	-0.6	-0.8	-0.7	4.1
1	C000	0	0	0	0	95.4	-0.3	0.4	3.0	94.7	-0.3	-1.6	2.2	-0.8	0.0	-2.1	-1.1	1.9

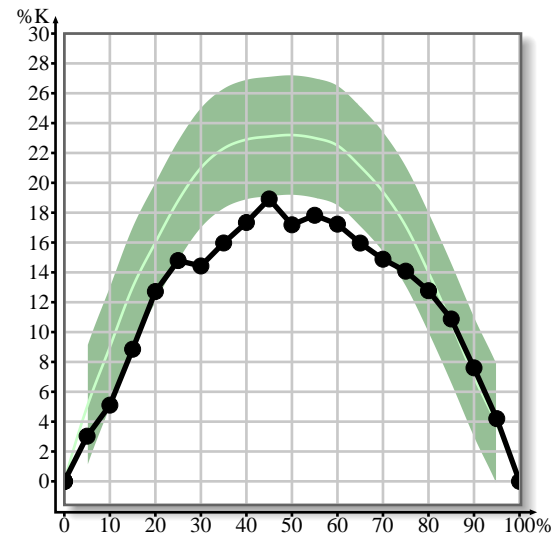
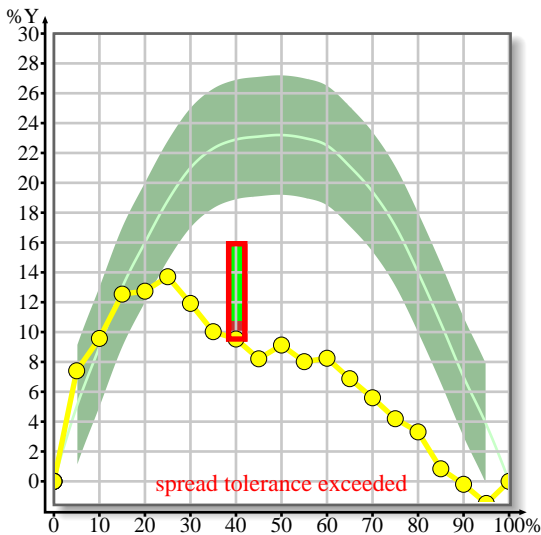
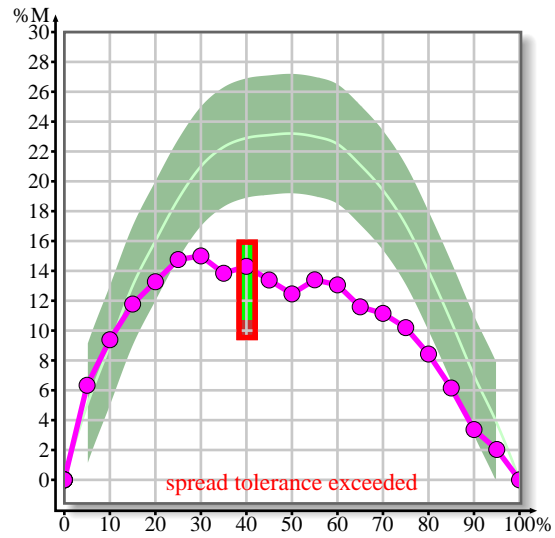
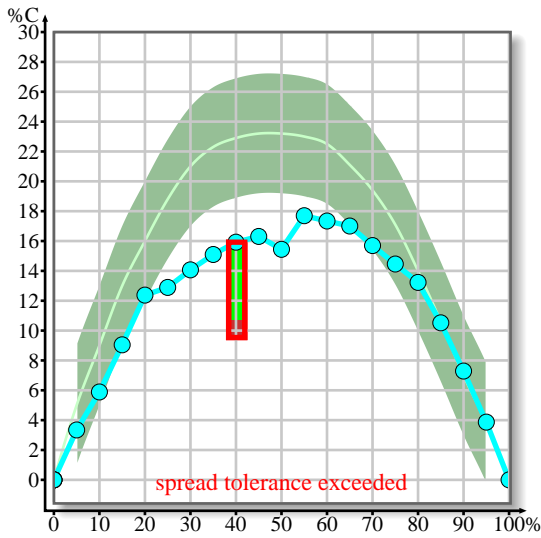
Legend: bold values exceed tolerance



2 Tolerances for Dot Gain

Dot %	Cyan			Magenta			Yellow			Black		
	Aim	Tol	C	Aim	Tol	M	Aim	Tol	Y	Aim	Tol	K
0.0	0.0	4.0	0.00	0.0	4.00	0.00	0.0	4.00	0.00	0.0	4.0	0.00
5.0	5.0	4.0	3.34	5.0	4.00	6.34	5.0	4.00	7.41	5.0	4.0	3.03
10.0	9.0	4.0	5.89	9.0	4.00	9.39	9.0	4.00	9.57	9.0	4.0	5.11
15.0	13.0	4.0	9.05	13.0	4.00	11.78	13.0	4.00	12.54	13.0	4.0	8.85 ●
20.0	16.0	4.0	12.38	16.0	4.00	13.27	16.0	4.00	12.74	16.0	4.0	12.72
25.0	18.8	4.0	12.89 ●	18.8	4.00	14.76 ●	18.8	4.00	13.71 ●	18.8	4.0	14.79 ●
30.0	21.0	4.0	14.07 ●	21.0	4.00	15.00 ●	21.0	4.00	11.92 ●	21.0	4.0	14.43 ●
35.0	22.3	4.0	15.10 ●	22.3	4.00	13.84 ●	22.3	4.00	10.03 ●	22.3	4.0	15.97 ●
40.0	22.9	4.0	15.92 ●	22.9	4.00	14.30 ●	22.9	4.00	9.54 ●	22.9	4.0	17.34 ●
45.0	23.2	4.0	16.31 ●	23.1	4.00	13.39 ●	23.1	4.00	8.21 ●	23.1	4.0	18.92 ●
50.0	23.2	4.0	15.44 ●	23.2	4.00	12.46 ●	23.2	4.00	9.13 ●	23.2	4.0	17.19 ●
55.0	23.0	4.0	17.70 ●	23.0	4.00	13.40 ●	23.0	4.00	8.02 ●	23.0	4.0	17.83 ●
60.0	22.5	4.0	17.34 ●	22.5	4.00	13.06 ●	22.5	4.00	8.25 ●	22.5	4.0	17.23 ●
65.0	21.1	4.0	17.00 ●	21.1	4.00	11.59 ●	21.1	4.00	6.88 ●	21.1	4.0	15.96 ●
70.0	19.4	4.0	15.70	19.4	4.00	11.15 ●	19.4	4.00	5.60 ●	19.4	4.0	14.88 ●
75.0	17.1	4.0	14.46	17.1	4.00	10.20 ●	17.1	4.00	4.20 ●	17.1	4.0	14.08
80.0	14.0	4.0	13.23	14.0	4.00	8.43 ●	14.0	4.00	3.31 ●	14.0	4.0	12.77
85.0	10.6	4.0	10.52	10.6	4.00	6.15 ●	10.6	4.00	0.84 ●	10.6	4.0	10.88
90.0	7.0	4.0	7.29	7.0	4.00	3.37	7.0	4.00	-0.20 ●	7.0	4.0	7.60
95.0	3.8	4.0	3.87	3.8	4.00	2.03	3.8	4.00	-1.48 ●	3.8	4.0	4.20
100.0	0.0	4.0	0.00	0.0	4.00	0.00	0.0	4.00	0.00	0.0	4.0	0.00

Legend: gray reference values are interpolated, bold values exceed tolerance



3 Tolerances for Dot Value

Dot %	Cyan			Magenta			Yellow			Black		
	Aim	Tol	C	Aim	Tol	M	Aim	Tol	Y	Aim	Tol	K
0.0	0.0	4.0	0.00	0.0	4.00	0.00	0.0	4.00	0.00	0.0	4.0	0.00
5.0	10.0	4.0	8.34	10.0	4.00	11.34	10.0	4.00	12.41	10.0	4.0	8.03
10.0	19.0	4.0	15.89	19.0	4.00	19.39	19.0	4.00	19.57	19.0	4.0	15.11
15.0	28.0	4.0	24.05	28.0	4.00	26.78	28.0	4.00	27.54	28.0	4.0	23.85 ●
20.0	36.0	4.0	32.38	36.0	4.00	33.27	36.0	4.00	32.74	36.0	4.0	32.72
25.0	43.8	4.0	37.89 ●	43.8	4.00	39.76 ●	43.8	4.00	38.71 ●	43.8	4.0	39.79 ●
30.0	51.0	4.0	44.07 ●	51.0	4.00	45.00 ●	51.0	4.00	41.92 ●	51.0	4.0	44.43 ●
35.0	57.3	4.0	50.10 ●	57.3	4.00	48.84 ●	57.3	4.00	45.03 ●	57.3	4.0	50.97 ●
40.0	62.9	4.0	55.92 ●	62.9	4.00	54.30 ●	62.9	4.00	49.54 ●	62.9	4.0	57.34 ●
45.0	68.2	4.0	61.31 ●	68.1	4.00	58.39 ●	68.1	4.00	53.21 ●	68.1	4.0	63.92 ●
50.0	73.2	4.0	65.44 ●	73.2	4.00	62.46 ●	73.2	4.00	59.13 ●	73.2	4.0	67.19 ●
55.0	78.0	4.0	72.70 ●	78.0	4.00	68.40 ●	78.0	4.00	63.02 ●	78.0	4.0	72.83 ●
60.0	82.5	4.0	77.34 ●	82.5	4.00	73.06 ●	82.5	4.00	68.25 ●	82.5	4.0	77.23 ●
65.0	86.1	4.0	82.00 ●	86.1	4.00	76.59 ●	86.1	4.00	71.88 ●	86.1	4.0	80.96 ●
70.0	89.4	4.0	85.70	89.4	4.00	81.15 ●	89.4	4.00	75.60 ●	89.4	4.0	84.88 ●
75.0	92.1	4.0	89.46	92.1	4.00	85.20 ●	92.1	4.00	79.20 ●	92.1	4.0	89.08
80.0	94.0	4.0	93.23	94.0	4.00	88.43 ●	94.0	4.00	83.31 ●	94.0	4.0	92.77
85.0	95.6	4.0	95.52	95.6	4.00	91.15 ●	95.6	4.00	85.84 ●	95.6	4.0	95.88
90.0	97.0	4.0	97.29	97.0	4.00	93.37	97.0	4.00	89.80 ●	97.0	4.0	97.60
95.0	98.8	4.0	98.87	98.8	4.00	97.03	98.8	4.00	93.52 ●	98.8	4.0	99.20
100.0	100.0	4.0	100.00	100.0	4.00	100.00	100.0	4.00	100.00	100.0	4.0	100.00

Legend: gray reference values are interpolated, bold values exceed tolerance

